

UPDATES FOR PULSE CONNECT SECURE 8.1, PULSE POLICY SECURE 5.1 AND PULSE CLIENT 5.1

Bulletin Date

December 18, 2014

Applicable to All Regions

Effective Change Date:

December 18, 2014

Introduction

This Product Bulletin is the first in a series of documents that describe new features and functions available from Pulse Secure, LLC. Pulse Secure, LLC is a leading provider of access and mobile security solutions to both enterprises and service providers. Formed on October 1, 2014, Pulse Secure combines the security-networking technology of Juniper Network's Junos Pulse business with the mobile innovation of Mobile Spaces. The recent releases of Pulse Connect Secure 8.1, Pulse Policy Secure 5.1 and Pulse Client 5.1 are addressed here.

These releases address ongoing BYOD challenges and simplify the secure access experience for mobile professionals independent of their location and device. Today, IT administrators are constantly resource challenged and recent IT transformations, like Cloud and BYOD, continue to impact traditional networking policies. With these releases from Pulse Secure, companies now have a single, advanced platform to simplify and streamline BYOD onboarding and management. Details of automated onboarding of BYOD users independent of location and device, streamlined remote connectivity and expanded compliance enforcement are explained in the features notes, below.

Additionally, with Pulse Secure Workspace for smartphones and tablets, enterprises will now have a simple way to eliminate data-at-rest risks while continuing to support any mobile app so that their end users can access collaboration apps on the go from campus to the road.

Rebranding

Pulse Connect Secure 8.1, Pulse Policy Secure 5.1, and the Pulse Secure 5.1 desktop and mobile clients now feature new Pulse Secure branding. Please reference diagram 1 and 2 for re-branded examples.

When you upgrade to Pulse Connect Secure 8.1 and Pulse Policy Secure 5.1, please be aware of these visible changes. Please note that these cosmetic changes have no impact on the functionality of the products.

What's New

Pulse Connect Secure 8.1

Highlighted Features in this Release

Key Feature	Benefit
• BYOD onboarding	• Provides automated onboarding of BYOD clients remotely. Reference Diagram 2.
• Citrix Storefront Support	• Citrix Storefront support via HTML5.
• SharePoint 2013 Support	• Support latest updates to SharePoint 2013 .
• MDM Integration Improvements	• Enhance administrator's ability to manage devices.
• A/P and A/A Clustering Improvements	• A/A clustering with Config-Sync-only option increases concurrent user capacity.
• AAA and Radius Improvements	• Improve troubleshooting and usage of session timeout attributes.
• Max User Session Options	• Provides graceful handling of multiple user sessions.
• Advanced Config Sync	• Ability for admin to use push config capability in a much more granular manner.

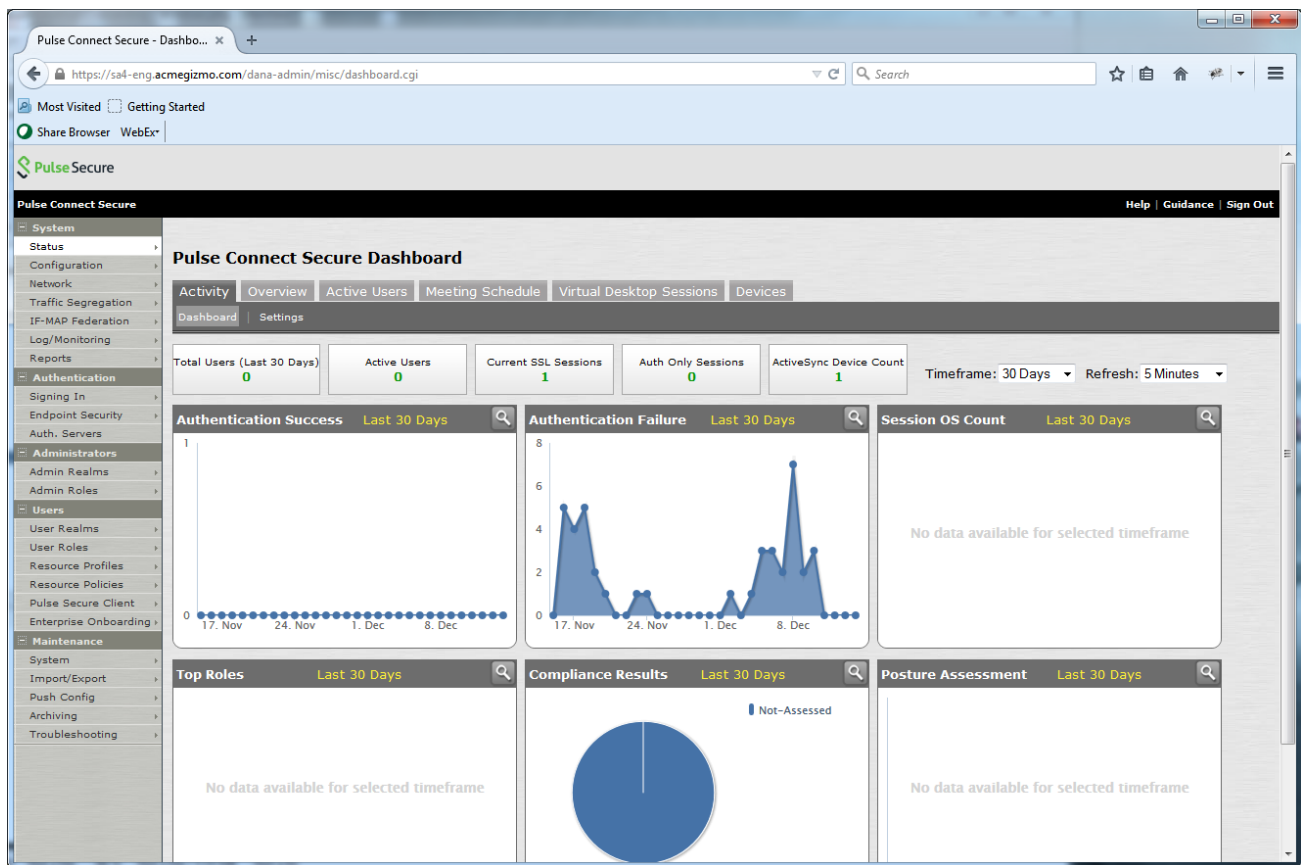


Diagram 1

Pulse Policy Secure 5.1

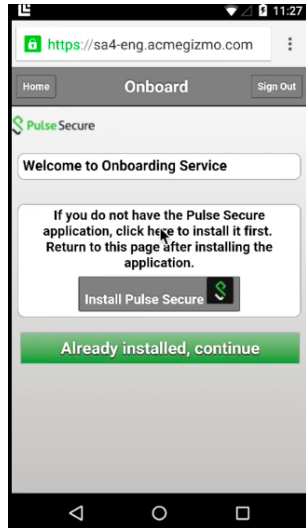
Highlighted Features in this Release

Key Feature	Benefit
<ul style="list-style-type: none">• BYOD onboarding	<ul style="list-style-type: none">• Provides automated onboarding of BYOD clients on premises (WLAN & LAN) and remotely (integration with Pulse Connect Secure). Reference Diagram 2.
<ul style="list-style-type: none">• OPSWAT HDD Encryption Detection	<ul style="list-style-type: none">• Host Checking policies based on HDD encryption settings.
<ul style="list-style-type: none">• Various performance improvements	<ul style="list-style-type: none">• Shorten the amount of time needed to get users on the network.
<ul style="list-style-type: none">• SMS Notification for Guest User	<ul style="list-style-type: none">• Added to the email option to provide immediate credentials to users.
<ul style="list-style-type: none">• OPSWAT replacing Shavlik for Patch Management	<ul style="list-style-type: none">• OPSWAT offers a broader offering in management and remediation.

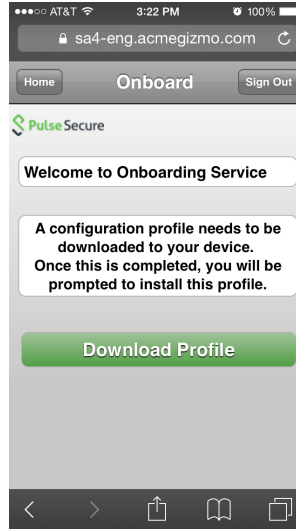
Pulse Client 5.1

Highlighted Features in this Release

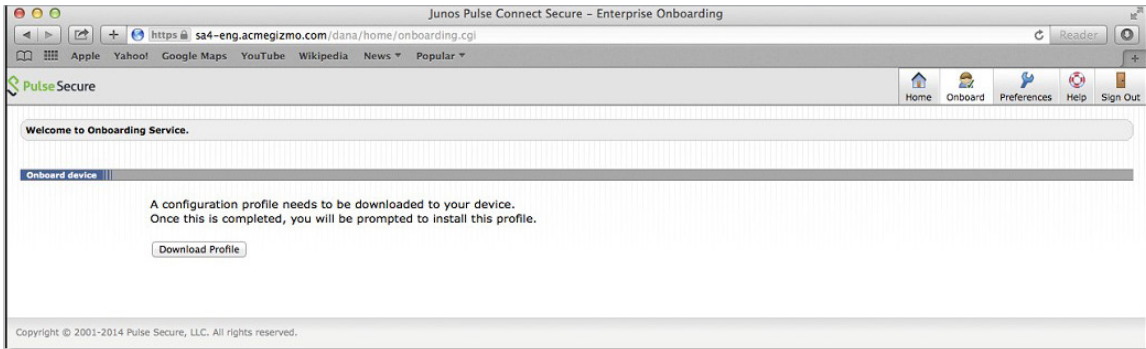
Key Feature	Benefit
<ul style="list-style-type: none">• Captive Portal Detection	<ul style="list-style-type: none">• Improves usability by letting users know steps needed to get on local network.
<ul style="list-style-type: none">• Smart Connection Management	<ul style="list-style-type: none">• Offers end users high resiliency for a connection in case the primary gateway fails or is unreachable. Also offers essential client-initiated load balancing.
<ul style="list-style-type: none">• Enhanced Location Awareness	<ul style="list-style-type: none">• Allows admins to enforce location awareness rules on endpoints in a more granular manner.
<ul style="list-style-type: none">• Onboarding support for latest mobile devices	<ul style="list-style-type: none">• Support updates for iOS 8.1, iPhone 6 and iPhone 6+ devices, and Android 5.0 (Lollipop).



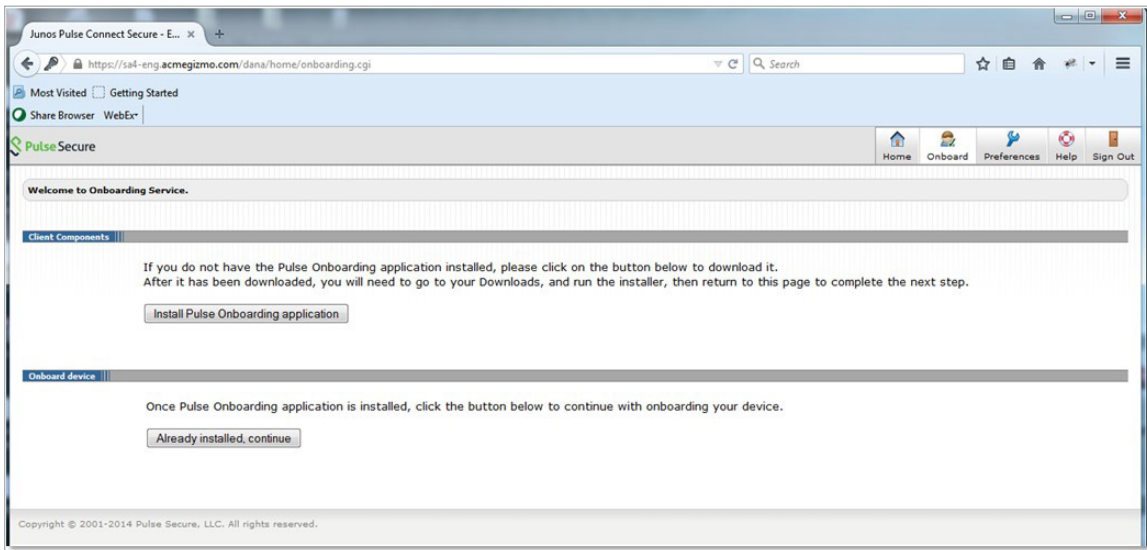
Onboarding - Android



Onboarding - iOS



Onboarding - Mac



Onboarding - Windows

Diagram 2

Learn More

Resources

- [Pulse Connect Secure datasheet](#)
- [Pulse Policy Secure datasheet](#)
- [Pulse WorkSpace datasheet](#)

www.pulsesecure.net

About Pulse Secure, LLC

Pulse Secure, LLC is a leading provider of access and mobile security solutions to both enterprises and service providers. Enterprises from every vertical and of all sizes utilize the company's Pulse virtual private network (VPN), network access control and mobile security products to enable end user mobility securely and seamlessly in their organizations. Pulse Secure's mission is to enable open, integrated enterprise system solutions that empower business productivity through seamless mobility.

Corporate and Sales Headquarters

Pulse Secure LLC
2700 Zanker Rd. Suite 200
San Jose, CA 95134
www.pulsesecure.net

Copyright 2014 Pulse Secure, LLC. All rights reserved. Pulse Secure and the Pulse Secure logo are registered trademarks or Pulse Secure, LLC. All trademarks, service marks, registered marks, or registered service marks are the property of their respective owners. Pulse Secure assumes no responsibility for any inaccuracies in this document. Pulse Secure reserves the right to change, modify, transfer, or otherwise revise this publication without notice.