

**BARRACUDA SPAM FIREWALL-OUTBOUND**

## Barracuda Spam Firewall-Outbound

Powerful, easy to use, and affordable outbound email delivery with spam and virus protection.

The Barracuda Spam Firewall-Outbound is a mail transfer agent (MTA) that uses sophisticated email filtering and policy management to protect organizations against virus and spam proliferation, and information sharing that violates corporate policies. Designed as an integrated hardware and software solution, the Barracuda Spam Firewall-Outbound is priced with no per user license fees making it the most affordable solution for outbound email protection.

### Comprehensive, Affordable Email Protection

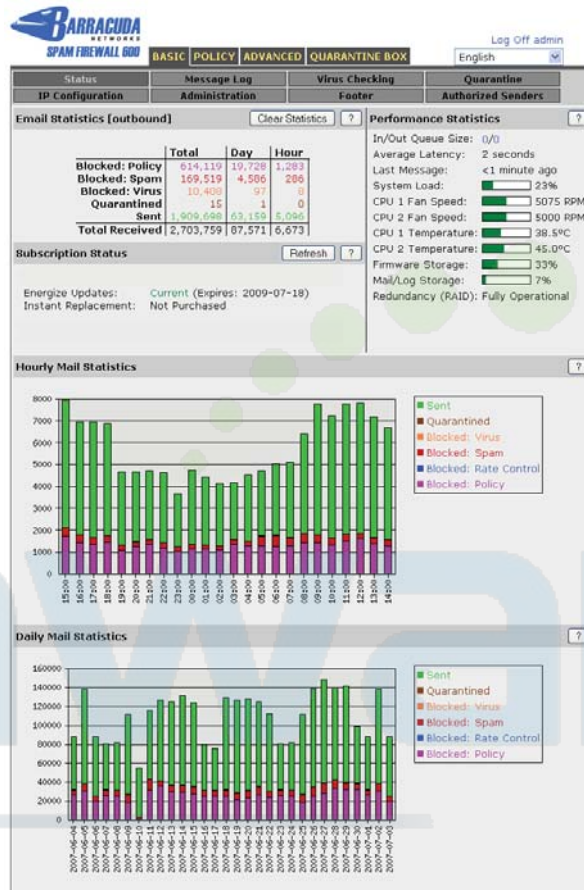
Supporting up to 45,000 active email users per unit, the Barracuda Spam Firewall-Outbound employs various blocking techniques to prevent crippling virus outbreaks and advanced rate controls for zombie attacks. To enforce corporate information policies that may need to comply with government regulations, the Barracuda Spam Firewall-Outbound can block messages using rules based on Sarbanes-Oxley, HIPAA, and Gramm-Leach-Bliley, as well as other privacy protection policies. Administrators can also set quarantine parameters that enable questionable email to be reviewed and released, or blocked as needed.

The Barracuda Spam Firewall-Outbound can be clustered for greater capacity and higher availability to ensure that all email delivery is legitimate and virus-free.

### Ease of Use and Maintenance

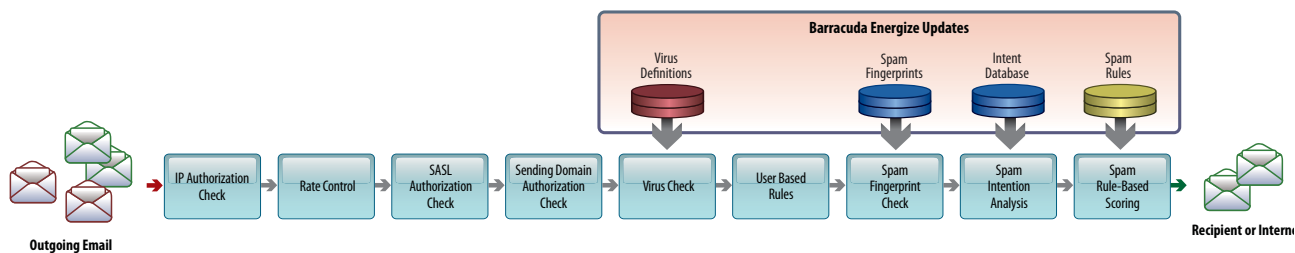
With no software to install or network modifications, the easy-to-use Barracuda Spam Firewall-Outbound solution is easy to deploy and supports remote workers as a reliable email relay. The Barracuda Spam Firewall-Outbound can replace any existing outbound email relay and sits between client machines and the Internet.

Energize Updates are delivered automatically by Barracuda Central which is staffed by highly trained engineers who continuously monitor and block the latest Internet threats. As new threats emerge, Barracuda Central is quick to respond to early outbreaks and delivers the latest definitions through Energize Updates.



The Barracuda Spam Firewall-Outbound can distribute traffic for multiple services, including Web, email and other network applications.

### Barracuda Spam Firewall Outbound Architecture

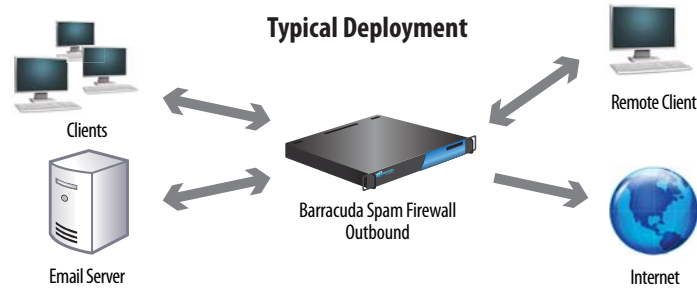


**MODEL**  
200  
300  
400  
600  
800  
900



# BARRACUDA SPAM FIREWALL-OUTBOUND

MODEL  
200  
300  
400  
600  
800  
900



## TECHNICAL SPECIFICATIONS

### Key Features

#### STOPS VIRUS PROLIFERATION

- Dual layer virus blocking
- Decompression of archives
- File type blocking
- Virus outbreak warnings

#### ENFORCES CORPORATE POLICIES

- Footer attachment (HTML/text)
- Keyword blocking/quarantine
- Regular expression blocking/quarantine
- Attachment blocking/quarantine
- Outbound quarantine
- Rules for Credit Card, SSN, Privacy and HIPAA
- Journaling

#### PREVENTS SPAMMING

- Rate controls
- Domain restrictions
- IP restrictions
- Authentication (SASL/TLS)
- Remote user support

### OPERATIONAL

- Email quarantine and blocking
- Multilingual user interface
- Multiple domain support

### Administration Features

- Web-based interface
- User account administration
- Reports, graphs, and statistics
- Secure Remote Administration
- LDAP interface

### Front Panel Indicators

- Activity indicator
- Email blocked indicator
- Email quarantined indicator
- Email received indicator
- Power indicator
- Power button
- Reset button

### Connectors

- VGA
- PS/2 keyboard/mouse
- Ethernet (see chart below)
- Serial Port (DB-9)

### Power Requirements

- AC input voltage 100-240 volts
- Frequency 50/60 Hz

### Support Options

#### ENERGIZE UPDATES SUBSCRIPTION

- Hourly spam rule updates
- Hourly virus definition updates
- Real-time blacklist updates

#### INSTANT REPLACEMENT SERVICE

- Replacement unit shipped next business day
- 24x7 technical support

| MODEL COMPARISON                  | MODEL 200         | MODEL 300         | MODEL 400         | MODEL 600         | MODEL 800         | MODEL 900         |
|-----------------------------------|-------------------|-------------------|-------------------|-------------------|-------------------|-------------------|
| <b>CAPACITY*</b>                  |                   |                   |                   |                   |                   |                   |
| Active Email Users                | 1,000             | 2,000             | 10,000            | 25,000            | 30,000            | 45,000            |
| <b>HARDWARE</b>                   |                   |                   |                   |                   |                   |                   |
| Rackmount Chassis                 | 1U Mini           | 1U Mini           | 1U Mini           | 1U Fullsize       | 2U Fullsize       | 2U Fullsize       |
| Dimensions (in.)                  | 16.7 x 1.7 x 14   | 16.7 x 1.7 x 14   | 16.7 x 1.7 x 14   | 16.7 x 1.7 x 22.5 | 16.5 x 3.5 x 25.5 | 16.8 x 3.5 x 25.5 |
| Dimensions (cm.)                  | 42.4 x 4.3 x 35.6 | 42.4 x 4.3 x 35.6 | 42.4 x 4.3 x 35.6 | 42.4 x 4.3 x 57.1 | 42.8 x 8.9 x 64.8 | 42.8 x 8.9 x 64.8 |
| Weight (lbs. / kg.)               | 17 / 7.7          | 17 / 7.7          | 18 / 8.2          | 35 / 15.9         | 40 / 18.1         | 48 / 21.8         |
| Ethernet                          | 1 x 10/100        | 1 x 10/100        | 1 x 10/100        | 2 x Gigabit       | 2 x Gigabit       | 2 x Gigabit       |
| AC Input Current (Amps)           | 1.0               | 1.2               | 1.4               | 1.8               | 4.1               | 5.4               |
| Redundant Disk Array (RAID)       |                   |                   | ✓                 | Hot Swap          | Hot Swap          | Hot Swap          |
| Redundant Power Supply            |                   |                   |                   |                   | ✓                 | ✓                 |
| ECC Memory                        |                   |                   |                   | ✓                 | Hot Swap          | Hot Swap          |
| <b>FEATURES</b>                   |                   |                   |                   |                   |                   |                   |
| Compatible with all Email Servers | ✓                 | ✓                 | ✓                 | ✓                 | ✓                 | ✓                 |
| Hardened and Secure OS            | ✓                 | ✓                 | ✓                 | ✓                 | ✓                 | ✓                 |
| Customizable Footer Attachments   | ✓                 | ✓                 | ✓                 | ✓                 | ✓                 | ✓                 |
| Journaling                        | ✓                 | ✓                 | ✓                 | ✓                 | ✓                 | ✓                 |
| Multi-Language Support            | ✓                 | ✓                 | ✓                 | ✓                 | ✓                 | ✓                 |
| MS Exchange/LDAP/Active Directory |                   | ✓                 | ✓                 | ✓                 | ✓                 | ✓                 |
| Outbound Quarantine               |                   | ✓                 | ✓                 | ✓                 | ✓                 | ✓                 |
| Syslog Support                    |                   | ✓                 | ✓                 | ✓                 | ✓                 | ✓                 |
| Clustering                        |                   |                   | ✓                 | ✓                 | ✓                 | ✓                 |
| Per Domain Settings               |                   |                   | ✓                 | ✓                 | ✓                 | ✓                 |
| SNMP/API                          |                   |                   | ✓                 | ✓                 | ✓                 | ✓                 |
| Customizable Branding             |                   |                   |                   | ✓                 | ✓                 | ✓                 |

US-1

\*Capacity depends on environment and selected options.