



The Aruba AP 2E

The Aruba AP 2E is a low-cost, two-port wired access point designed to secure network traffic from a user port across an IP network to an Aruba mobility controller, where security services are applied to all user sessions. The Aruba AP 2E appears as a transparent bridge to an end user device, such as a PC or an Ethernet hub, and as an IP endpoint to the rest of the network. When connected to an IP network, the Aruba AP 2E transparently establishes a GRE or IPsec tunnel over

the network to automatically locate an Aruba mobility controller. All user traffic is securely passed over this tunnel to the Aruba mobility controller. The Aruba AP 2E can be securely mounted to a wall socket gang box, and powered by 802.3af Power-over-Ethernet or externally powered from an optional AC adapter. No logical or physical reconfiguration of the network is required.

Performance

- Traffic Throughput - 100Mbps

Security Specs

- Encryption support
- IPsec, AES
- 40-bit / 64-bit / 128-bit
- Diffie-Hellman Group II IKE Pre-shared Key
- Tunneling support
- GRE, L2TP, IPsec NAT-T
- RADIUS AAA GP Enrollment/Disablement

Ease of Deployment

- Plug and Play provisioning using
- DNS, DHCP
- Aruba Discovery Protocol (ADP)

Manageability

- Management of all Ethernet, Wired Security & Authentication parameters
- Network-wide management via:
 - CLI
 - WEB GUI
 - SNMPv3
- Access point profiles
- Management by:
 - Geographical location
 - Port ID

Aruba 2E Physical (H/W/D)

- 167 x 190 x 30mm (6.57 x 7.48 x 1.18 in.)
- Weight 260 grams (9.17 oz.)

Interfaces (Electrical)

- 2 x 10/100 Base-TX auto-sensing
- Ethernet RJ-45 interfaces (Port 0)
- Auto-sensing MDI/MDX
- Power-over-Ethernet - 48V DC / 200mA power-over-Ethernet (802.3af compliant)
- Redundant Data Link and Power-over-Ethernet
- Serial-over-Ethernet
- Ethernet RJ-45 interfaces (Port 1)
- Auto-sensing Link Speed

- Power-over-Ethernet - 48V DC / 200mA power over Ethernet (802.3af compliant)
- Redundant Data Link and
- Power-over-Ethernet
- USB ver2.0 Interface
- 1 x 5V DC Power Interface

Interfaces (Mechanical)

- Standard Kensington MicroSaver security cable interface (not supplied)
- Wall, gang-box and ceiling mount kit interface (optional - part number AP-70-MNT)

Visual Indicators (LEDS)

- (Ready) Power on/off
- (Ethernet 0/1) link status / activity

Power Requirements

- External AC power or POE
- 5V DC / 2A supplied externally via optional country specific AC adapter kits
- 48V DC / 200mA power-over-Ethernet (802.3af compliant)

Environmental

- Temperature
 - Operating: 0 to 50 °C (32 to 122 °F)
 - Storage: 0 to 70 °C (32 to 158 °F)
- Humidity 5% to 95% (non-condensing)

Standards

- Ethernet IEEE 802.3 / IEEE 802.3u
- Power-over-Ethernet IEEE 802.3af
- USB 2.0

Safety

- UL Listed (UL60950)
- UL Listed (Canadian Electrical Code/CSA22.2 No. 60950)
- EN60950 / IEC60950
- National Electrical Code Section300-22(C)
- Canadian Electrical Code, Part 1,
- CSA C22.1 Sections 2-128, 12-010(3), and 12-100

Electromagnetic Compliance

- FCC Part 15 Class B
- FCC Part 15 Class C 15.207/15.247
- FCC Part 15 Class E 15.407
- ICES-003 Class A
- RSS 210 (CAN)
- VCCI Class A
- EN 61000-3, EN 61000-4-2, EN 61000-4-3, EN 61000-4-4
- EN 61000-4-5, EN 61000-4-6, EN 61000-4-8, EN 61000-4-11
- 73/23/EEC and 89/336/EEC
- EN 55022, EN5502 4 (89/336/EEC)
- ETS 300 328 (89/336/EEC),
- ETS 301 489 (89/336/EEC)
- ETS 301 893
- AS/NZS 3548 Class A
- RFS 29 (NZ) Ar 2E
- 2-Port Wired Access Point

Part Numbers

AP 2E

Aruba 2E 2-Port Wired Security Access Point

AP-70-MNT

Aruba Access Point Mounting Kit

AC Power Adapter Country Kit Variants

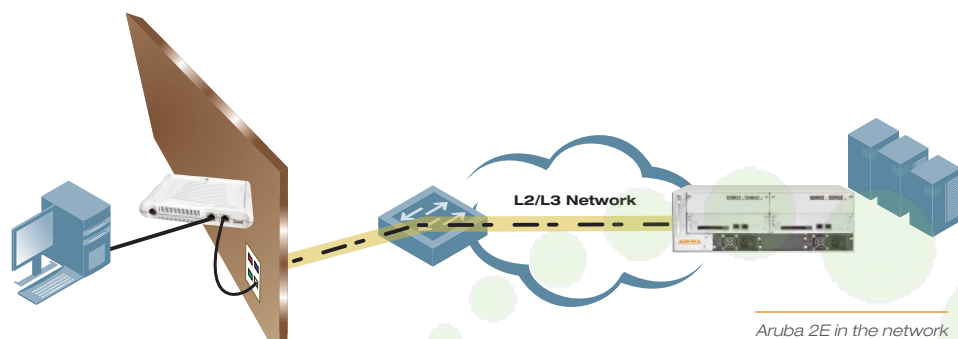
AP-AC-NA (North America)

AP-AC-JPN (Japan)

AP-AC-UK (United Kingdom)

AP-AC-EC (Central Europe, Schuko)

AP-AC-IT (Italy)



Altaware

inc.



The Mobile Edge Company

www.arubanetworks.com

1322 Crossman Avenue
Sunnyvale, California 94089
Tel: 408.227.4500 • Fax: 408.227.4550

*Extended with support contract

© 2005 Aruba Wireless Networks, Inc. All rights reserved. Aruba Networks and Aruba The Mobile Edge Company are trademarks of Aruba Wireless Networks, Inc. All other trademarks or registered trademarks are the property of their respective holders. Specifications are subject to change without notice.

10.5.SSAP2E.kh.10.1