



Performance by Design



AX 1000

Advanced Traffic Manager
New-generation Server Load Balancer

- ▶ Industry's most efficient Performance per Watt 1U server load balancer
- ▶ Maximize application availability, scalability & performance
- ▶ Enhance end user experience

The AX 1000, part of A10 Networks' award-winning AX Series Advanced Traffic Manager family, is designed to meet the growing demands of Web Application Delivery. The AX 1000 is an entry-level 1U appliance that delivers advanced features at an affordable and competitive price. It offers intelligent application processing capabilities with industry-leading performance and scalability to meet critical business requirements in an energy-saving "green" form factor.

The AX 1000 includes A10's Advanced Core Operating System (ACOS), which integrates modern multi-core, multi-threaded software to provide performance advantages. Leveraging Symmetric Multiprocessing (SMP) technologies, the AX 1000 processes application traffic in parallel fashion, without the need to copy data or replicate computing instructions. As a result, applications run faster with AX 1000 than competing systems on the market today.



Greener Application Delivery

▶ Measuring maximum power consumption when all the interfaces are connected with running traffic, the AX 1000 delivers the industry's most efficient Performance per Watt per rack unit and 1U device.



Superior Performance per Watt

- L4 Connections per Second per Watt: 968
- L7 Connections per Second per Watt: 778



AX Series Features

» Application Delivery Features

- Comprehensive IPv4/IPv6 Support
- Advanced Layer 4/Layer 7 Server Load Balancing
 - ◆ Fast TCP, Fast UDP, Fast HTTP, Full HTTP Proxy
 - ◆ High-performance, template-based Layer 7 switching with header/url/ domain manipulation
 - ◆ Comprehensive Layer 7 application persistence support
- Comprehensive load balancing methods
 - ◆ Round Robin, Least Connections, Weighted RR, Weighted LC, Fastest Response
- aFlex – allows deep packet inspection and transformation for customizable, application-aware switching
- Advanced Health Monitoring
 - ◆ Comprehensive Protocol Support - ICMP, TCP, UDP, HTTP, HTTPS, FTP, RTSP, SMTP, POP3, SNMP, DNS, RADIUS, LDAP
 - ◆ TCL Scriptable Health Check support
 - ◆ High Availability - Active-Active, Active-Standby configurations with sub-second failover
 - ◆ SIP Load Balancing for VoIP and other rich-media applications
 - ◆ Secure Email Support – STARTTLS, POPS, LDAPS, SMTPS, IMAPS

- Spam Filter Support – allows high-speed application of very large black/white lists
- Firewall Load Balancing (FWLB)
- Global Server Load Balancing (GSLB)
- Transparent and Gateway Mode Support
- Transparent Cache Switching (TCS)
- Link Load Balancing

» Acceleration & Security Features

- HTTP Acceleration & Optimization
 - ◆ HTTP Connection Multiplexing
 - ◆ HTTP Caching
 - ◆ HTTP Compression
- SSL Acceleration
 - ◆ Hardware-based SSL Offload
 - ◆ Support for all TCP Protocols – SSL Termination, SSL Bridging (SSL Initiation)
- SSL Session ID Re-use
- DDoS Protection (SYN Flood)

» High Performance, Scalable Platform

- ACOS Operating System
 - ◆ Multi-core Support
 - ◆ Linear Application Scaling
 - ◆ Linux on Control Plane
- ACOS on Data Plane

» Networking

- Integrated Layer 2/Layer 3
- Transparent Mode/Gateway Mode
- Routing - RIP, OSPF, Static Routes
- VLAN
- Trunking
- Access Control Lists (ACLs)

» Network Address Translation (NAT)

- Traditional IPv4-IPv4 NAT/NAPT
- Application Level Gateways (ALGs) for FTP, RTSP, MMS, SIP
- NAT-PT (Protocol Translation) (IPv4-<->IPv6, IPv6-<->IPv4)

» Management

- Dedicated Management Interface (Console, SSH, Telnet, HTTPS)
- Web-based Graphical User Interface (GUI) with Language Localization
- Industry-standard Command Line Interface Support
- SNMP, Syslog, Alerting
- Port Mirroring
- Virtualized Management
 - ◆ Role Based Administration (RBA)
 - ◆ Partition Based Management
- REST-style XML API (aXAPI)



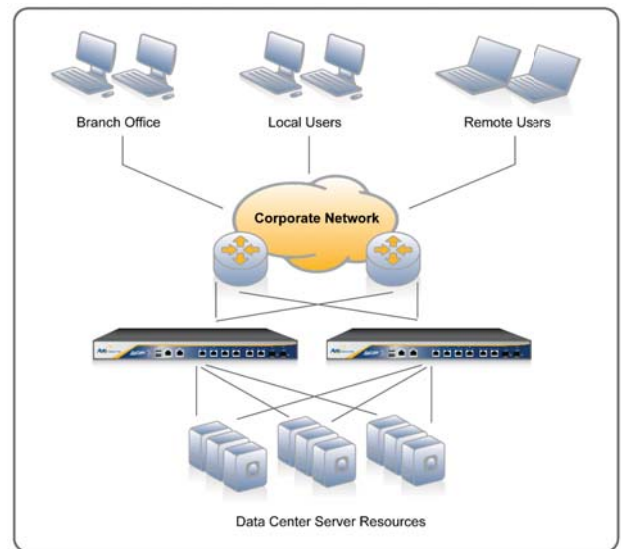
AX 1000 Hardware Summary

| | AX 1000 |
|-----------------------------|--|
| Processor | 1 x Quad Core |
| Memory | 2 GB Fixed |
| Ethernet Interface | 6 Gig Copper, 2 Gig Fiber – SFP Mini GBIC |
| Management Interface | 1 Dedicated |
| Console Port | 1 Console Interface |
| Hard Disk | Single |
| Compact Flash | 1 GB |
| Power Supply | Single, Fixed 250 W, 100 – 240 VAC, Frequency 50 – 60 Hz |
| Max Power Consumption | 158 W |
| Operating Temperature Range | 0° – 40° C |
| Dimensions | 1.75 in (H) x 17.3 in (W) x 16.7 in (D) 1U Rack Mountable |
| Unit Weight | 16 lbs |
| Regulatory Certification | FCC Class A, UL, CE, TUV, CB, VCCI |
| Standard Warranty | 90-day Hardware & Software |



Your A10 Networks Reseller

www.altaware.com sales@altaware.com
(866) 833-4070



High Availability Deployment

